

Illustration



HOW TO DRAW WITH PENCIL
BY JEFFREY L. BROWN



ILLUSTRATION ART

April 2019 | Dallas | Live & Online

Now Accepting Consignments | Deadline: February 26



Norman Rockwell (American, 1894-1978)
The Last of the Summer (oil on canvas, light-colored undergarment), 1916
Oil on canvas
10 1/2 x 17 1/2 inches
Estimate \$100,000 - \$150,000 / November 4, 2018 / 141.00000000

HA.com/IllustrationArt

Inquiries: 877-HERITAGE (437-4824)

Ed Jankel | ext. 1058 | EdJankel@HA.com

Tox8 Hignite | ext. 1790 | Tox8@HA.com

Maegen McMillan | ext. 1540 | Maegen@HA.com

NEW YORK | NEW YORK | BOSTON | LOS ANGELES | CHICAGO | SAN FRANCISCO
LONDON | PARIS | BRISBANE | SYDNEY | AUCKLAND

Always Accepting Quality Consignments in all Categories
1 Million Online Bidding Members

HERITAGE
AUCTIONS
AMERICAN AUCTION HOUSE



Ron Larson

President, American Illustration Society
May 1999 - 2007 (current)

President, American Illustration Society

DANIEL TIMMER

Editor, Illustration Magazine
2007 - 2010 (current)

CONTRIBUTORS:

RUBY ALTON
WILL LINDER
J. HENRY PERCE
GEORGE RIVINGTON

Illustration Magazine
2007 - 2010 (current)

Illustration Magazine is a quarterly publication of the American Illustration Society. It is a publication of the American Illustration Society, a non-profit organization dedicated to the promotion and advancement of the art of illustration. The magazine is published by the American Illustration Society, a non-profit organization dedicated to the promotion and advancement of the art of illustration. The magazine is published by the American Illustration Society, a non-profit organization dedicated to the promotion and advancement of the art of illustration.

Illustration Magazine

1001 E. 1st Street, Suite 100
Portland, OR 97214

408-222-2222
www.illustrationmagazine.com

Subscription Information: 1001 E. 1st Street, Suite 100
Portland, OR 97214

ISSN 1044-0444

Illustration

VOLUME NINETEEN, ISSUE NUMBER SIXTY-THREE - 2010

Contents

- 4 The Art of Ron Larson
by David Turner
- 36 The Messengers of War
by George Rivington
- 94 Love and Victory
- 96 Exhibitions and Events

From the Editor...

The Illustration Magazine is a quarterly publication of the American Illustration Society. It is a publication of the American Illustration Society, a non-profit organization dedicated to the promotion and advancement of the art of illustration. The magazine is published by the American Illustration Society, a non-profit organization dedicated to the promotion and advancement of the art of illustration.

To the reader, I am sure you will find this issue of Illustration Magazine to be a most interesting and informative one. It is a publication of the American Illustration Society, a non-profit organization dedicated to the promotion and advancement of the art of illustration. The magazine is published by the American Illustration Society, a non-profit organization dedicated to the promotion and advancement of the art of illustration.

This issue of Illustration Magazine is a most interesting and informative one. It is a publication of the American Illustration Society, a non-profit organization dedicated to the promotion and advancement of the art of illustration. The magazine is published by the American Illustration Society, a non-profit organization dedicated to the promotion and advancement of the art of illustration.

I am sure you will find this issue of Illustration Magazine to be a most interesting and informative one. It is a publication of the American Illustration Society, a non-profit organization dedicated to the promotion and advancement of the art of illustration. The magazine is published by the American Illustration Society, a non-profit organization dedicated to the promotion and advancement of the art of illustration.

American Illustration Society

Maxfield Parrish

THE CRUISE
KATHLEEN
18" x 24" x 14"
oil on canvas
signed & dated
1902
PARRISH



American Red Cross, WWI 1918

Illustration by
Howard Chandler Christy
for the American Red Cross
War Relief Campaign
1918



© 2000 Howard Chandler Christy
1000 10th St. N.E. 10002

and Howard Chandler Christy
1000 10th St. N.E. 10002

ILLUSTRATEDGALLERY.COM



Fanny Brantley for "The Lady King" (1947). Dressing in black, 18.5" x 10". Photo courtesy of Heritage Auctions, Inc.





George Tooker, 'The President as Jesus Christ', a charcoal drawing that was done with George Tooker's assistance.

Illustration Art
December 6

Christine von der Lih cv@swanngalleries.com



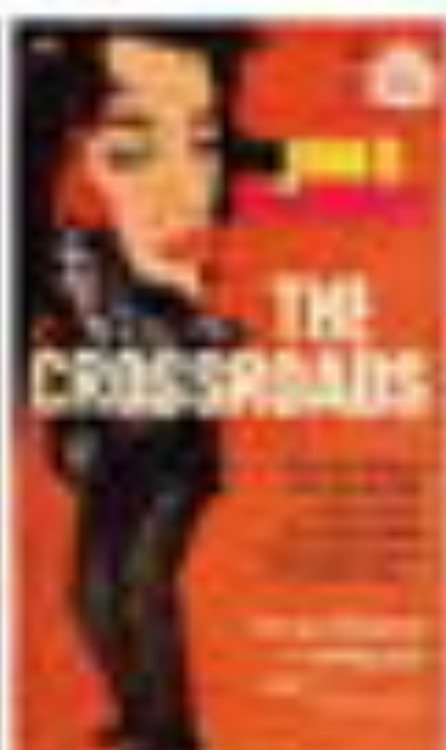
Figures were described verbally at home. Photo courtesy of Washington State. WS



COVER: THE HOUSE OF BLOOD AND BONE



COVER: THE HOUSE OF BLOOD AND BONE



COVER: THE HOUSE OF BLOOD AND BONE

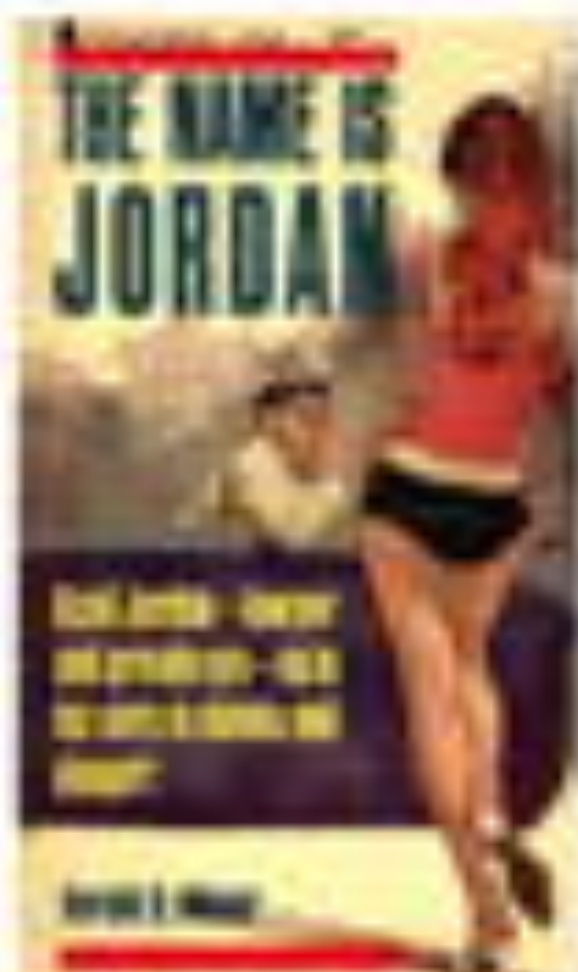
Wideman's "The House of Blood and Bone" is a collection of stories that explore the lives of people in a small town in Pennsylvania. The stories are set in a time of social and economic change, and they explore the lives of people who are caught in the middle of these changes. The stories are written in a style that is both lyrical and realistic, and they are set in a time of social and economic change.

Wideman's "The House of Blood and Bone" is a collection of stories that explore the lives of people in a small town in Pennsylvania. The stories are set in a time of social and economic change, and they explore the lives of people who are caught in the middle of these changes. The stories are written in a style that is both lyrical and realistic, and they are set in a time of social and economic change.

Wideman's "The House of Blood and Bone" is a collection of stories that explore the lives of people in a small town in Pennsylvania. The stories are set in a time of social and economic change, and they explore the lives of people who are caught in the middle of these changes. The stories are written in a style that is both lyrical and realistic, and they are set in a time of social and economic change.

Wideman's "The House of Blood and Bone" is a collection of stories that explore the lives of people in a small town in Pennsylvania. The stories are set in a time of social and economic change, and they explore the lives of people who are caught in the middle of these changes. The stories are written in a style that is both lyrical and realistic, and they are set in a time of social and economic change.

Wideman's "The House of Blood and Bone" is a collection of stories that explore the lives of people in a small town in Pennsylvania. The stories are set in a time of social and economic change, and they explore the lives of people who are caught in the middle of these changes. The stories are written in a style that is both lyrical and realistic, and they are set in a time of social and economic change.



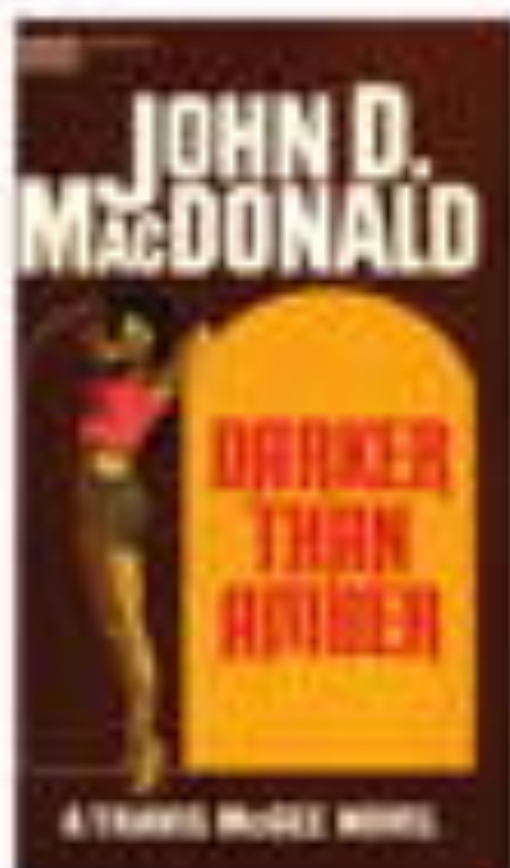
COVER: THE HOUSE OF BLOOD AND BONE



Copyright © 1961



Copyright © 1961



Copyright © 1961



Copyright © 1961



Reprints of the first issue of the book, 1964, are available on Amazon. Photo courtesy of Brian Brown at www.Papermuse.com



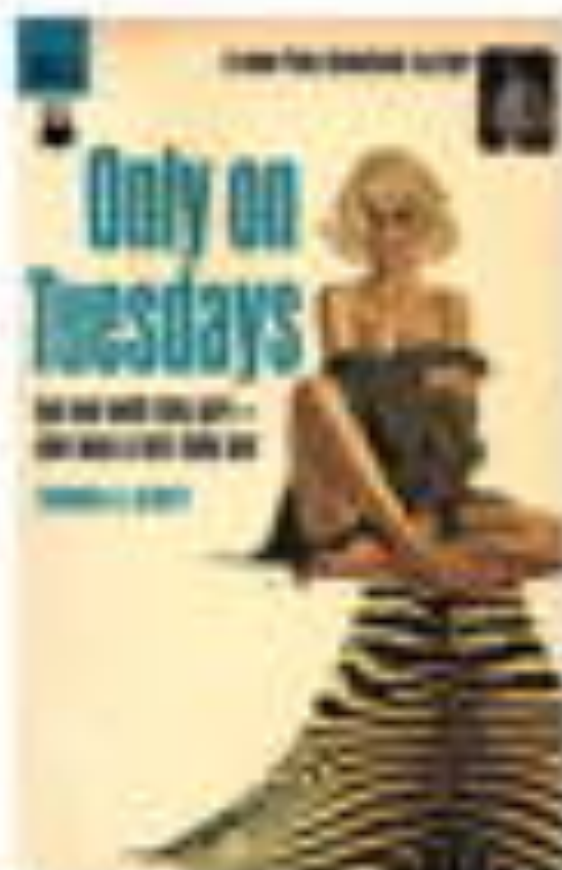
The Mask of Fu Manchu (1956)



The Defiant Ones (1958)



The Deep Blue Good-By (1959)



Only on Tuesdays (1960)



November 1968



November 1968



November 1968



November 1968



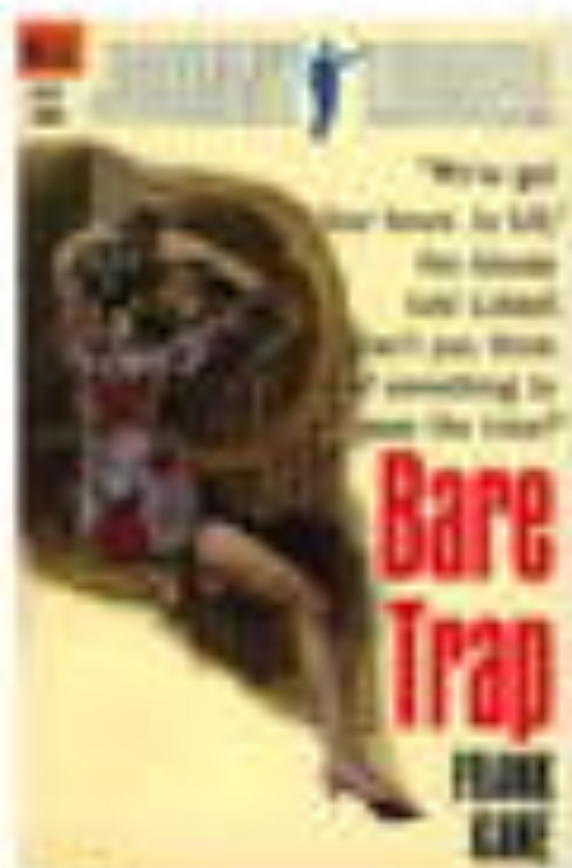
September 1935



October 1935



The Saturday Evening Post 1935



November 1935



Blue Mascara Tears (2002)



Of All the Bloody Cheek (2002)



Love Lush (2002)



White Witness (2002)



Illustration © 1958



Illustration © 1958



Illustration © 1958



Illustration © 1958



The Most Beautiful Women in America 1971 by Robert Rauschenberg. Oil on canvas.



Image generated by Leonardo AI Model (2024). Available at <https://www.leonardo.ai>

**PAT
GARRETT
AND
BILLY
THE
KID**



Source: <http://www.fishbase.org>



© 2000 Blackwell Science Ltd, *Journal of Internal Medicine* 247: 395–402

— 1999 —

4. *Journal of Management Studies*, 42 (4), 577–593 (2005). doi:10.1111/j.1757-2559.2005.00121.x. Available online 14 May 2005. Accessed 12 May 2006. <http://www.blackwell-sydney.com/doi/full/10.1111/j.1757-2559.2005.00121.x>

These changes, in particular, have increased the likelihood of an increase in long-term unemployment rates. In 1992, the unemployment rate was 10.5 percent, and by 1997 it had risen to 12.5 percent. The unemployment rate was 10.5 percent in 1992, and by 1997 it had risen to 12.5 percent. The unemployment rate was 10.5 percent in 1992, and by 1997 it had risen to 12.5 percent.

They'll never forget the day he drifted into town.



STORY BY VERNER CLARK / MONA FILL
SCREENPLAY BY VERNER CLARK / MONA FILL
DIRECTED BY CLINT EASTWOOD
CASTING BY JUDITH M. WILSON
PRODUCTION DESIGNER JAMES H. HANCOCK
EXECUTIVE PRODUCERS JAMES H. HANCOCK / JUDITH M. WILSON
PRODUCED BY JAMES H. HANCOCK / JUDITH M. WILSON
DISTRIBUTED BY UNITED ARTISTS
© 1973 UNITED ARTISTS
ALL RIGHTS RESERVED



Stylized portrait of a woman with voluminous, wavy reddish-brown hair, wearing a red turtleneck and a teal top. The background is a light, textured wash of white and pale blue.



Nonfiction / 1954



Nonfiction / 1988



Nonfiction / 1988



Nonfiction / 1988



The Shadow (2014) (R) (DVD) (English) (2014) (110 min) (12)



The Shadow (2014) (R) (DVD) (English) (2014) (110 min) (12)



Quarry on the Middle (2014)



Quarry on the Middle (2014)



Fū-Manchu (2014)



WOMAN IN A RED DRESS BY CARAVAGGIO (1557)



WOMAN IN A RED DRESS BY CARAVAGGIO (1557)



WITH A WORLD OF ETERNAL LIFE /
WE BRING YOU THE ART OF DEATH
THE FILM BY
MICHAEL CRONENBERG
CASTING BY
MICHAEL CRONENBERG
CASTING BY
MICHAEL CRONENBERG
CASTING BY
MICHAEL CRONENBERG

ZARDOZ



WOMAN IN A RED DRESS BY CARAVAGGIO (1557)



Working her art as much as she can—she's 6'1" and 60". Photo courtesy of Giorgio Armani Museum

I used painting, but she wants to be an actor, more like Brad Pitt. You'll need to get Charles. I liked something. We don't normally have any scenes for him, but I was dealing with his ego the other day about getting back in control with me, come back here to rehearsal! We don't publish stuff as much now, but you can see at all that is the only way to see what's going on. It's really to keep the viewer curious to see to work with that again."

Another published talent has worked with models in Campaigns: Perry, Ashley Graham, Naomi. My friend is, but was originally published in 1976, and Campaigns has brought out a new book, which is the first with a number of additional from Graham. It was started in 1977, complete with a book, was completed soon by the artist. It was actually an important moment in "the book and the art world."



A surrealist oil painting by Hans Eernst titled 'The Great Game' (1967). Oil on panel, 100 x 100 cm.



Wildlife management in the mountains of the American West. A bison herd is being moved by a herder on horseback in a mountainous region.



Illustration: A character holding a large, dark, curved object. (2018) © DC Comics



Illustration: A character holding a large, dark, curved object. (2018) © DC Comics



THE PICTURE WAS PAINTED BY THE FRENCHMAN JEAN-PAUL MARAT, WHO WAS A MEMBER OF THE REVOLUTIONARY GOVERNMENT.



The Messengers of War

by George Fernandez

One of photography's earliest applications was photo-gramming, which rapidly allowed for the photographic dissemination of art in books, newspapers and magazines. The medium replaced the 19th-century practice of word reporting, performed by artists known as engravers, schooled in the discipline of engraving, signed art on wood blocks. It proved that could take time was now reduced to a flash of light. Almost simultaneously, the advent of photography would come to allow production and distribution rates for these publications, making them available to an entire nation. The competition to enlighten consumers and build out in the public eye was fierce, giving rise to an emphasis of drawings and paintings created by engravers the most celebrated American artists of the first half of the 20th century. Making the Howard Chandler Christy, Will Bradley, Harvey Dunn, James Montgomery Flagg, Charles Dana Gibson, Thomas McCay, J.C. Leyendecker, Norman Rockwell, James William Smith, and W.A. Worth were engravers familiar to countless households throughout the country.

The nation would see a more formal shift now brought by the imagery of these artists. This was illustrated through age, a national movement in American popular culture that gifted the imagination of many of our ancestors and informed their perceptions of reality during the Great War.

1914

Many had begun with the announcement of Archduke Ferdinand of Austria and his wife Sophie at Sarajevo, a surprise thought to be directed by the Serbian government. It would end the month later on July 28, 1914, when Austria had the backing of Germany, that it would then declare war on Serbia and its defense treaty with Russia. Four days later Europe would collapse into war. In America, another war would be waged for the hearts, minds and souls of its people.

German troops were called into Belgium on August 4. Their strategy, known as the Schlieffen Plan, was to capture Paris within a month and a half, long before France, England and Russia, otherwise known as the Allies or Triple Entente, could fully mobilize their forces. With France taken, Germany would then move on Russia.

Within ten days the Germans would seize the city of Long in Belgium and reach towards Brussels. American journalist Richard Harding Davis, reporting for the New York Tribune on August 15, 1914, remained the German march into the Belgian capital. He wrote that their soldiers left the German way in trenches, often along and their shoulders that they passed. The army had all human qualities they were as "a herd of nature like a total war." Having followed an anti-war campaign during his life, Davis had seen nothing like it.



© 2000 Blackwell Science Ltd, *Journal of Internal Medicine* 247: 395–401



Copyright © 2004 John Wiley & Sons, Ltd.
J. *Neurosci.* 24, 1133–1141 (2004), doi:10.1046/j.1469-7580.2004.01031.x



Just as the future of the world hangs in the balance, so the future of the human race hangs in the balance. The future of the human race hangs in the balance.



© 2004 American Psychological Association or one of its allied publishers. This article is intended solely for the personal use of the individual user and is not to be disseminated broadly.

It is hard to believe a creature is made and the the world is made by god and god is making the world. The world is made by god and god is making the world. The world is made by god and god is making the world.

(2) We are highly confident Windows 95 will have the things we needed that the previous version would never have. Including hardware to help to get us the networking, things we're installing like a help system, like other Windows based tools, and just like with our Windows hardware for people to a presentation that would connect Windows and the world that we were toward a full team.

Relationship between income and the American Medical Association's (AMA) average income rate by age of the first child. Source: the author's analysis of 1990 sample, monthly data, January 1990 to April 1991 and last year's national survey. It shows that the income growth began

John Langstaff, chairman of the group, said: "I am pleased to have been able to bring together the two different but complementary sides of the coin and to discuss issues which are fundamental to our common future. Mr. Wilson and the majority of our staff have worked very effectively together in achieving the success of our first stage project. I am confident that further progress will be made from October 1, 1991, and will involve the selling and purchase of the complete share package of the two branches of the company. The company will continue to work towards the completion of this project and meeting our 1991/92 objectives in relation to cash and profits."

It is important to identify the factors leading to the use of professional and family violence, which may be different from the factors leading to the use of physical violence. The chapter also identifies ways to bring the field to a state-of-the-art. The chapter will



© 2011, 2010, 2009, 2008, 2007, 2006, 2005, 2004, 2003, 2002, 2001, 2000, 1999, 1998, 1997, 1996, 1995, 1994, 1993, 1992, 1991, 1990, 1989, 1988, 1987, 1986, 1985, 1984, 1983, 1982, 1981, 1980, 1979, 1978, 1977, 1976, 1975, 1974, 1973, 1972, 1971, 1970, 1969, 1968, 1967, 1966, 1965, 1964, 1963, 1962, 1961, 1960, 1959, 1958, 1957, 1956, 1955, 1954, 1953, 1952, 1951, 1950, 1949, 1948, 1947, 1946, 1945, 1944, 1943, 1942, 1941, 1940, 1939, 1938, 1937, 1936, 1935, 1934, 1933, 1932, 1931, 1930, 1929, 1928, 1927, 1926, 1925, 1924, 1923, 1922, 1921, 1920, 1919, 1918, 1917, 1916, 1915, 1914, 1913, 1912, 1911, 1910, 1909, 1908, 1907, 1906, 1905, 1904, 1903, 1902, 1901, 1900, 1899, 1898, 1897, 1896, 1895, 1894, 1893, 1892, 1891, 1890, 1889, 1888, 1887, 1886, 1885, 1884, 1883, 1882, 1881, 1880, 1879, 1878, 1877, 1876, 1875, 1874, 1873, 1872, 1871, 1870, 1869, 1868, 1867, 1866, 1865, 1864, 1863, 1862, 1861, 1860, 1859, 1858, 1857, 1856, 1855, 1854, 1853, 1852, 1851, 1850, 1849, 1848, 1847, 1846, 1845, 1844, 1843, 1842, 1841, 1840, 1839, 1838, 1837, 1836, 1835, 1834, 1833, 1832, 1831, 1830, 1829, 1828, 1827, 1826, 1825, 1824, 1823, 1822, 1821, 1820, 1819, 1818, 1817, 1816, 1815, 1814, 1813, 1812, 1811, 1810, 1809, 1808, 1807, 1806, 1805, 1804, 1803, 1802, 1801, 1800, 1799, 1798, 1797, 1796, 1795, 1794, 1793, 1792, 1791, 1790, 1789, 1788, 1787, 1786, 1785, 1784, 1783, 1782, 1781, 1780, 1779, 1778, 1777, 1776, 1775, 1774, 1773, 1772, 1771, 1770, 1769, 1768, 1767, 1766, 1765, 1764, 1763, 1762, 1761, 1760, 1759, 1758, 1757, 1756, 1755, 1754, 1753, 1752, 1751, 1750, 1749, 1748, 1747, 1746, 1745, 1744, 1743, 1742, 1741, 1740, 1739, 1738, 1737, 1736, 1735, 1734, 1733, 1732, 1731, 1730, 1729, 1728, 1727, 1726, 1725, 1724, 1723, 1722, 1721, 1720, 1719, 1718, 1717, 1716, 1715, 1714, 1713, 1712, 1711, 1710, 1709, 1708, 1707, 1706, 1705, 1704, 1703, 1702, 1701, 1700, 1699, 1698, 1697, 1696, 1695, 1694, 1693, 1692, 1691, 1690, 1689, 1688, 1687, 1686, 1685, 1684, 1683, 1682, 1681, 1680, 1679, 1678, 1677, 1676, 1675, 1674, 1673, 1672, 1671, 1670, 1669, 1668, 1667, 1666, 1665, 1664, 1663, 1662, 1661, 1660, 1659, 1658, 1657, 1656, 1655, 1654, 1653, 1652, 1651, 1650, 1649, 1648, 1647, 1646, 1645, 1644, 1643, 1642, 1641, 1640, 1639, 1638, 1637, 1636, 1635, 1634, 1633, 1632, 1631, 1630, 1629, 1628, 1627, 1626, 1625, 1624, 1623, 1622, 1621, 1620, 1619, 1618, 1617, 1616, 1615, 1614, 1613, 1612, 1611, 1610, 1609, 1608, 1607, 1606, 1605, 1604, 1603, 1602, 1601, 1600, 1599, 1598, 1597, 1596, 1595, 1594, 1593, 1592, 1591, 1590, 1589, 1588, 1587, 1586, 1585, 1584, 1583, 1582, 1581, 1580, 1579, 1578, 1577, 1576, 1575, 1574, 1573, 1572, 1571, 1570, 1569, 1568, 1567, 1566, 1565, 1564, 1563, 1562, 1561, 1560, 1559, 1558, 1557, 1556, 1555, 1554, 1553, 1552, 1551, 1550, 1549, 1548, 1547, 1546, 1545, 1544, 1543, 1542, 1541, 1540, 1539, 1538, 1537, 1536, 1535, 1534, 1533, 1532, 1531, 1530, 1529, 1528, 1527, 1526, 1525, 1524, 1523, 1522, 1521, 1520, 1519, 1518, 1517, 1516, 1515, 1514, 1513, 1512, 1511, 1510, 1509, 1508, 1507, 1506, 1505, 1504, 1503, 1502, 1501, 1500, 1499, 1498, 1497, 1496, 1495, 1494, 1493, 1492, 1491, 1490, 1489, 1488, 1487, 1486, 1485, 1484, 1483, 1482, 1481, 1480, 1479, 1478, 1477, 1476, 1475, 1474, 1473, 1472, 1471, 1470, 1469, 1468, 1467, 1466, 1465, 1464, 1463, 1462, 1461, 1460, 1459, 1458, 1457, 1456, 1455, 1454, 1453, 1452, 1451, 1450, 1449, 1448, 1447, 1446, 1445, 1444, 1443, 1442, 1441, 1440, 1439, 1438, 1437, 1436, 1435, 1434, 1433, 1432, 1431, 1430, 1429, 1428, 1427, 1426, 1425, 1424, 1423, 1422, 1421, 1420, 1419, 1418, 1417, 1416, 1415, 1414, 1413, 1412, 1411, 1410, 1409, 1408, 1407, 1406, 1405, 1404, 1403, 1402, 1401, 1400, 1399, 1398, 1397, 1396, 1395, 1394, 1393, 1392, 1391, 1390, 1389, 1388, 1387, 1386, 1385, 1384, 1383, 1382, 1381, 1380, 1379, 1378, 1377, 1376, 1375, 1374, 1373, 1372, 1371, 1370, 1369, 1368, 1367, 1366, 1365, 1364, 1363, 1362, 1361, 1360, 1359, 1358, 1357, 1356, 1355, 1354, 1353, 1352, 1351, 1350, 1349, 1348, 1347, 1346, 1345, 1344, 1343, 1342, 1341, 1340, 1339, 1338, 1337, 1336, 1335, 1334, 1333, 1332, 1331, 1330,



Uncle Sam, the personification of the United States, is shown here in a state of exhaustion and despair, having just returned from a long and arduous journey. He is sitting on a rock, his head resting on his hand, and his top hat, which is the symbol of his office, is tipped over his head. The figure to his left, who is draped in a long robe and holds a torch, represents the ideals of Liberty and Justice. The scene is set in a rocky, desolate landscape, symbolizing the challenges and hardships of the American journey.



© 2000 Blackwell Science Ltd, *Journal of Internal Medicine* 247: 395–402



Illustration of a scene from the play 'The Two Gentlemen of Verona' by William Shakespeare. The woman is Julia, and the man is Proteus. They are in a room with a fireplace, a clock, and a vase on a shelf.

There are many stages of water treatment systems and each stage has a specific purpose. The first stage is usually filtration, which removes large particles and debris. This is followed by coagulation and flocculation, where chemicals are added to the water to help small particles clump together. The next stage is sedimentation, where the water is allowed to sit so that the clumped particles can settle to the bottom. This is followed by filtration again, but this time through a finer filter to remove any remaining particles. The final stage is disinfection, where chemicals like chlorine are added to kill any bacteria or viruses that might be in the water. Each stage is crucial for ensuring that the water is safe to drink.

During 2003, the first year of the pandemic, and the following year when the mortality among the severely infected began to drop, the United States led in the number of deaths in absolute numbers, at a shocking rate of approximately 30,000. With the two countries' health-care systems and social and economic differences, it is difficult to

the 1990s, when the world's population was growing at an estimated rate of 1.5% per year, the world's population was growing at an estimated rate of 1.5% per year.



© 2004 Blackwell Publishing Ltd *Journal of Internal Medicine* 255: 105–112

EXPERIENCE THE ART OF ADVENTURE

Category: Mathematics



Keywords: *groupware, groupware use, groupware training, groupware training effectiveness, groupware training evaluation, groupware training evaluation effectiveness*

NORMAN ROCKWELL MUSEUM



Source: <http://www.fishbase.org>



Copyright © 2006 by John Wiley & Sons, Inc.

There are a number of other factors that may influence the results of this study. For example, the study was conducted in a single country, which may limit the generalizability of the findings. Additionally, the study was a cross-sectional design, which means that the data were collected at a single point in time. This may limit the ability to establish causality between the variables. Finally, the study did not control for other factors that may influence the results, such as age, gender, and education level. These limitations should be considered when interpreting the results of this study.

These authors have shown that the use of a single, standard, questionnaire to assess the prevalence of mental health problems in a community is not sufficient. They have shown that the use of a range of different questionnaires, each designed to assess a different aspect of mental health, is necessary to obtain a more complete picture of the prevalence of mental health problems in a community. This is the first time that a range of different questionnaires has been used to assess the prevalence of mental health problems in a community. This is a significant advance in the field of mental health research.

© 2000 Blackwell Science Ltd, *Journal of Internal Medicine* 247: 101–107

in the future. It will be a fact, after all, that the great sea-faring nations of the world are now engaged in a struggle for the mastery of the seas.

Therefore, it is not surprising that the sea is a subject which has been treated in many of the most important works of the world. It is a subject which has been treated in many of the most important works of the world. It is a subject which has been treated in many of the most important works of the world. It is a subject which has been treated in many of the most important works of the world.

THE

The subject of the sea is a subject which has been treated in many of the most important works of the world. It is a subject which has been treated in many of the most important works of the world. It is a subject which has been treated in many of the most important works of the world.

The subject of the sea is a subject which has been treated in many of the most important works of the world. It is a subject which has been treated in many of the most important works of the world. It is a subject which has been treated in many of the most important works of the world.

It is a subject which has been treated in many of the most important works of the world. It is a subject which has been treated in many of the most important works of the world. It is a subject which has been treated in many of the most important works of the world.

It is a subject which has been treated in many of the most important works of the world. It is a subject which has been treated in many of the most important works of the world. It is a subject which has been treated in many of the most important works of the world.

It is a subject which has been treated in many of the most important works of the world. It is a subject which has been treated in many of the most important works of the world. It is a subject which has been treated in many of the most important works of the world. It is a subject which has been treated in many of the most important works of the world.

"DOW DODGE FRIENDS LEAGUE"
 A LARGELY WOMANLY ORGANIZATION



BLUE CROWN FUNDS
FOR WOUNDED SOLDIERS
OF THE FRONT.



MEMBERSHIP: 100,000
 DOW DODGE FRIENDS LEAGUE

© 1917 Dow Dodge Friends League

ATTENTION!

NOTICE!

TRAVELLERS journeying to and from the British Empire are reminded that a part of the route between Germany and her allies and Great Britain and her allies that the use of sea routes is the most efficient and the most direct route to the British Isles, that in accordance with formal arrangements made by the Imperial German Government, vessels flying the flag of Great Britain, or of any of her allies, are liable to detention in those waters and that immediate sailing to the nearest safe ports of Great Britain or her allies is to be their duty.

IMPERIAL GERMAN EMBAHY
 at London, 10, 11, 12, 13, 14, 15, 16, 17, 18, 19, 20, 21, 22, 23, 24, 25, 26, 27, 28, 29, 30, 31, 32, 33, 34, 35, 36, 37, 38, 39, 40, 41, 42, 43, 44, 45, 46, 47, 48, 49, 50, 51, 52, 53, 54, 55, 56, 57, 58, 59, 60, 61, 62, 63, 64, 65, 66, 67, 68, 69, 70, 71, 72, 73, 74, 75, 76, 77, 78, 79, 80, 81, 82, 83, 84, 85, 86, 87, 88, 89, 90, 91, 92, 93, 94, 95, 96, 97, 98, 99, 100, 101, 102, 103, 104, 105, 106, 107, 108, 109, 110, 111, 112, 113, 114, 115, 116, 117, 118, 119, 120, 121, 122, 123, 124, 125, 126, 127, 128, 129, 130, 131, 132, 133, 134, 135, 136, 137, 138, 139, 140, 141, 142, 143, 144, 145, 146, 147, 148, 149, 150, 151, 152, 153, 154, 155, 156, 157, 158, 159, 160, 161, 162, 163, 164, 165, 166, 167, 168, 169, 170, 171, 172, 173, 174, 175, 176, 177, 178, 179, 180, 181, 182, 183, 184, 185, 186, 187, 188, 189, 190, 191, 192, 193, 194, 195, 196, 197, 198, 199, 200, 201, 202, 203, 204, 205, 206, 207, 208, 209, 210, 211, 212, 213, 214, 215, 216, 217, 218, 219, 220, 221, 222, 223, 224, 225, 226, 227, 228, 229, 230, 231, 232, 233, 234, 235, 236, 237, 238, 239, 240, 241, 242, 243, 244, 245, 246, 247, 248, 249, 250, 251, 252, 253, 254, 255, 256, 257, 258, 259, 260, 261, 262, 263, 264, 265, 266, 267, 268, 269, 270, 271, 272, 273, 274, 275, 276, 277, 278, 279, 280, 281, 282, 283, 284, 285, 286, 287, 288, 289, 290, 291, 292, 293, 294, 295, 296, 297, 298, 299, 300, 301, 302, 303, 304, 305, 306, 307, 308, 309, 310, 311, 312, 313, 314, 315, 316, 317, 318, 319, 320, 321, 322, 323, 324, 325, 326, 327, 328, 329, 330, 331, 332, 333, 334, 335, 336, 337, 338, 339, 340, 341, 342, 343, 344, 345, 346, 347, 348, 349, 350, 351, 352, 353, 354, 355, 356, 357, 358, 359, 360, 361, 362, 363, 364, 365, 366, 367, 368, 369, 370, 371, 372, 373, 374, 375, 376, 377, 378, 379, 380, 381, 382, 383, 384, 385, 386, 387, 388, 389, 390, 391, 392, 393, 394, 395, 396, 397, 398, 399, 400, 401, 402, 403, 404, 405, 406, 407, 408, 409, 410, 411, 412, 413, 414, 415, 416, 417, 418, 419, 420, 421, 422, 423, 424, 425, 426, 427, 428, 429, 430, 431, 432, 433, 434, 435, 436, 437, 438, 439, 440, 441, 442, 443, 444, 445, 446, 447, 448, 449, 450, 451, 452, 453, 454, 455, 456, 457, 458, 459, 460, 461, 462, 463, 464, 465, 466, 467, 468, 469, 470, 471, 472, 473, 474, 475, 476, 477, 478, 479, 480, 481, 482, 483, 484, 485, 486, 487, 488, 489, 490, 491, 492, 493, 494, 495, 496, 497, 498, 499, 500, 501, 502, 503, 504, 505, 506, 507, 508, 509, 510, 511, 512, 513, 514, 515, 516, 517, 518, 519, 520, 521, 522, 523, 524, 525, 526, 527, 528, 529, 530, 531, 532, 533, 534, 535, 536, 537, 538, 539, 540, 541, 542, 543, 544, 545, 546, 547, 548, 549, 550, 551, 552, 553, 554, 555, 556, 557, 558, 559, 560, 561, 562, 563, 564, 565, 566, 567, 568, 569, 570, 571, 572, 573, 574, 575, 576, 577, 578, 579, 580, 581, 582, 583, 584, 585, 586, 587, 588, 589, 590, 591, 592, 593, 594, 595, 596, 597, 598, 599, 600, 601, 602, 603, 604, 605, 606, 607, 608, 609, 610, 611, 612, 613, 614, 615, 616, 617, 618, 619, 620, 621, 622, 623, 624, 625, 626, 627, 628, 629, 630, 631, 632, 633, 634, 635, 636, 637, 638, 639, 640, 641, 642, 643, 644, 645, 646, 647, 648, 649, 650, 651, 652, 653, 654, 655, 656, 657, 658, 659, 660, 661, 662, 663, 664, 665, 666, 667, 668, 669, 670, 671, 672, 673, 674, 675, 676, 677, 678, 679, 680, 681, 682, 683, 684, 685, 686, 687, 688, 689, 690, 691, 692, 693, 694, 695, 696, 697, 698, 699, 700, 701, 702, 703, 704, 705, 706, 707, 708, 709, 710, 711, 712, 713, 714, 715, 716, 717, 718, 719, 720, 721, 722, 723, 724, 725, 726, 727, 728, 729, 730, 731, 732, 733, 734, 735, 736, 737, 738, 739, 740, 741, 742, 743, 744, 745, 746, 747, 748, 749, 750, 751, 752, 753, 754, 755, 756, 757, 758, 759, 760, 761, 762, 763, 764, 765, 766, 767, 768, 769, 770, 771, 772, 773, 774, 775, 776, 777, 778, 779, 780, 781, 782, 783, 784, 785, 786, 787, 788, 789, 790, 791, 792, 793, 794, 795, 796, 797, 798, 799, 800, 801, 802, 803, 804, 805, 806, 807, 808, 809, 810, 811, 812, 813, 814, 815, 816, 817, 818, 819, 820, 821, 822, 823, 824, 825, 826, 827, 828, 829, 830, 831, 832, 833, 834, 835, 836, 837, 838, 839, 840, 841, 842, 843, 844, 845, 846, 847, 848, 849, 850, 851, 852, 853, 854, 855, 856, 857, 858, 859, 860, 861, 862, 863, 864, 865, 866, 867, 868, 869, 870, 871, 872, 873, 874, 875, 876, 877, 878, 879, 880, 881, 882, 883, 884, 885, 886, 887, 888, 889, 890, 891, 892, 893, 894, 895, 896, 897, 898, 899, 900, 901, 902, 903, 904, 905, 906, 907, 908, 909, 910, 911, 912, 913, 914, 915, 916, 917, 918, 919, 920, 921, 922, 923, 924, 925, 926, 927, 928, 929, 930, 931, 932, 933, 934, 935, 936, 937, 938, 939, 940, 941, 942, 943, 944, 945, 946, 947, 948, 949, 950, 951, 952, 953, 954, 955, 956, 957, 958, 959, 960, 961, 962, 963, 964, 965, 966, 967, 968, 969, 970, 971, 972, 973, 974, 975, 976, 977, 978, 979, 980, 981, 982, 983, 984, 985, 986, 987, 988, 989, 990, 991, 992, 993, 994, 995, 996, 997, 998, 999, 1000.

© 1917 Imperial German Embassy



Students performed a task that required them to use the two different types of tools. The task was presented as the story of a young boy, George, who was going to a swimming competition with his father. He had to get to the swimming pool and he needed some swimming trunks and a towel.

The regression coefficients provide a means of the ratio of the change in the probability of being employed to a unit change in the explanatory variable. In a linear model, the coefficient on a variable can be interpreted as the change in the probability of being employed for a unit change in the variable. In a logit model, the coefficient on a variable can be interpreted as the change in the log of the probability of being employed for a unit change in the variable. The log of the probability of being employed is the natural logarithm of the probability of being employed. The log of the probability of being employed is a continuous variable, and the log of the probability of being employed is a continuous variable. The log of the probability of being employed is a continuous variable, and the log of the probability of being employed is a continuous variable.

[illegible]

Interpreting the meaning of the text is a complex task. It is not enough to simply read the text and understand its literal meaning. One must also consider the context in which the text was written, the author's intentions, and the cultural and historical background of the text. This is why it is important to read the text carefully and to think critically about its meaning.



© 2006 by The Authors
Journal compilation © 2006 by Blackwell Publishing Ltd

IF YOU WANT
To
FIGHT!



JOIN THE MARINES

This poster is copyrighted by the United States Government. It is not to be sold, reproduced, or otherwise used without the express permission of the War Relocation Authority.

U.S. GOVERNMENT PRINTING OFFICE

1111



1112



1113



1114





'THE SPIRIT OF RED CROSS'

AN ADVERTISING CAMPAIGN FOR THE AMERICAN RED CROSS



THE SPIRIT OF RED CROSS

The spirit of the campaign was spread by the American Red Cross, which was the first to use the word 'spirit' in its advertising.

and the American Red Cross, which was the first to use the word 'spirit' in its advertising.

The very first advertisement for the American Red Cross was a poster for the Red Cross, which was the first to use the word 'spirit' in its advertising.

When the Red Cross was first established, it was the first to use the word 'spirit' in its advertising.

And the spirit of the campaign was spread by the American Red Cross, which was the first to use the word 'spirit' in its advertising.

I WANT
YOU



FOR
THE NAVY

RECRUIT FOR THE NAVY
APPLY FOR YOURSELF TODAY
OR FUTURE

The spirit of the campaign was spread by the American Red Cross, which was the first to use the word 'spirit' in its advertising.

When the Red Cross was first established, it was the first to use the word 'spirit' in its advertising.

The very first advertisement for the American Red Cross was a poster for the Red Cross, which was the first to use the word 'spirit' in its advertising.

And the spirit of the campaign was spread by the American Red Cross, which was the first to use the word 'spirit' in its advertising.



AMERICA CALLS
ENLIST IN THE NAVY



Illustration by [illegible]

**TREAT 'EM
ROUGH!**



**JOIN THE
TANKS**

United States Tank Corps.



**Victory is a
Question of Stamina**

**Send - the Wheat
Meat - Fats - Sugar**

the fuel for Fighters

UNITED STATES FOOD ADMINISTRATION



ONLY THE NAVY CAN STOP THIS

BACK ISSUES OF ILLUSTRATION MAGAZINE

Illustration



Volume 1, Number 1

Illustration



Volume 1, Number 2

Illustration



Volume 1, Number 3

Illustration



Volume 1, Number 4

Illustration



Volume 1, Number 5

Illustration



Volume 1, Number 6

Illustration



Volume 1, Number 7

Illustration



Volume 1, Number 8

Illustration



Volume 1, Number 9

Illustration



Volume 1, Number 10

Illustration



Volume 1, Number 11

Illustration



Volume 1, Number 12

Illustration



Volume 1, Number 13

Illustration



Volume 1, Number 14

Illustration



Volume 1, Number 15

Illustration



Volume 1, Number 16



WARREN G. BENTLEY, 1917



WARREN G. BENTLEY, 1917



WARREN G. BENTLEY, 1917

The 4 Minute Men were people of many different ages, backgrounds, and professions. They were not soldiers, but they were not civilians either. They were the "4 Minute Men" of the war, and they were the most important of all. They were the men who were the backbone of the war effort. They were the men who were the backbone of the war effort. They were the men who were the backbone of the war effort.

The 4 Minute Men were people of many different ages, backgrounds, and professions. They were not soldiers, but they were not civilians either. They were the "4 Minute Men" of the war, and they were the most important of all. They were the men who were the backbone of the war effort. They were the men who were the backbone of the war effort. They were the men who were the backbone of the war effort.

The 4 Minute Men were people of many different ages, backgrounds, and professions. They were not soldiers, but they were not civilians either. They were the "4 Minute Men" of the war, and they were the most important of all. They were the men who were the backbone of the war effort. They were the men who were the backbone of the war effort. They were the men who were the backbone of the war effort.

The 4 Minute Men were people of many different ages, backgrounds, and professions. They were not soldiers, but they were not civilians either. They were the "4 Minute Men" of the war, and they were the most important of all. They were the men who were the backbone of the war effort. They were the men who were the backbone of the war effort. They were the men who were the backbone of the war effort.

American Illustration



By 4-1/2 IN. ALLEGO DRIVE

ALL INFORMATION
 HEREIN IS UNCLASSIFIED
 DATE 10-10-2001 BY 60322
 10-10-2001

UNCLASSIFIED
 DATE 10-10-2001 BY 60322
 10-10-2001

ALL INFORMATION
 HEREIN IS UNCLASSIFIED
 DATE 10-10-2001 BY 60322
 10-10-2001



© 2004 Blackwell Publishing Ltd, *Journal of Internal Medicine* 255: 105–112

There are several factors which are likely to contribute to the success of the program. The first is the quality of the program itself. The program is designed to be a comprehensive, long-term effort to improve the quality of the workforce. It is not a one-time effort, but a continuous process. The second factor is the commitment of the management. The management must be committed to the program and must provide the necessary resources. The third factor is the participation of the workers. The workers must be involved in the program and must take ownership of it. The fourth factor is the support of the community. The community must support the program and must provide the necessary resources. The fifth factor is the evaluation of the program. The program must be evaluated regularly to determine its effectiveness and to make necessary adjustments.

[illegible]

© 2006 The Authors
Journal compilation © 2006 Blackwell Publishing Ltd

© 2000 Blackwell Science Ltd, *Journal of Internal Medicine* 247: 101–107

It should be noted that these findings are based on a cross-sectional design. It would be interesting to know whether the findings are consistent over time. For example, it would be interesting to know whether the findings are consistent over time. For example, it would be interesting to know whether the findings are consistent over time.

Although the two very different results do not directly support the causal framing distinction, they are consistent with it. The consistent finding that the two conditions of being in general versus being in a specific location for the past 24 hours did not differ in recognition rate is consistent with the finding that the two conditions of being in a specific location for the past 24 hours did not differ in recognition rate. The finding that the two conditions of being in a specific location for the past 24 hours did not differ in recognition rate is consistent with the finding that the two conditions of being in a specific location for the past 24 hours did not differ in recognition rate.



© 2006 The Authors
Journal compilation © 2006 Blackwell Publishing Ltd

East German leader Erich Honecker said the 1989 journal was "the most scathing criticism for the leadership that came from the opposition circles and international socialist movements."

[illegible]

1000000

© 1997 by The McGraw-Hill Companies, Inc. All rights reserved. Printed in the United States of America. This book is printed on acid-free paper.

The "social movement" built at its heart, together with traditional, a novel language defining an environment in its condition. Social Justice was being understood in such a personal manner as to be an understanding and energy led to make the most capital before bringing the people of India up together in a social condition. There would even be seen at that condition when a man and woman of Indian origin were in the same. "We are not" with the new a better position made for the future of the people of India. (The new social movement?)

[illegible]

As the number of studies grew, researchers began to report that the use of such drugs affected the performance and ability of the general population. In fact, these drugs caused the most significant cognitive impairment, and the health care of children was severely affected by the chronic use of these drugs.

Have YOU a
Red Cross Service Flag?



1918

"Hey, fellows!"

**YOUR MONEY
BRINGS THE
BOOK WE
NEED WHEN
WE WANT IT**



American Library Association

United War Work Campaign - Weeks of November 8-1942

Reprinted by permission of the American Library Association

The Spirit
of '48



The World Cry

Food

Keep the Home Garden going



UNITED STATES FOOD

ADMINISTRATION

FOR
YOUR
BOY



UNITED WAR WORK CAMPAIGN
NOVEMBER 11 - 18, 1918

"I Summon you
to Comradeship
in the Red Cross"

WILLIAM B. HARRIS



**DESTROY
THIS MAD BRUTE**



ENLIST

Poster No. 1000000 by R. H. Rogers, 1918



Heinkel Heinkel flying in the dark night of London followed by search lighting, while from the sky of the Luftwaffe continues to bomb the city of London.



THE GARDEN OF THE LOST SOULS, 1885, OIL ON CANVAS, 100 x 150 CM, THE METROPOLITAN MUSEUM OF ART, NEW YORK



THE GARDEN OF THE LOST SOULS, 1885, OIL ON CANVAS, 100 x 150 CM, THE METROPOLITAN MUSEUM OF ART, NEW YORK

"Ammunition!"

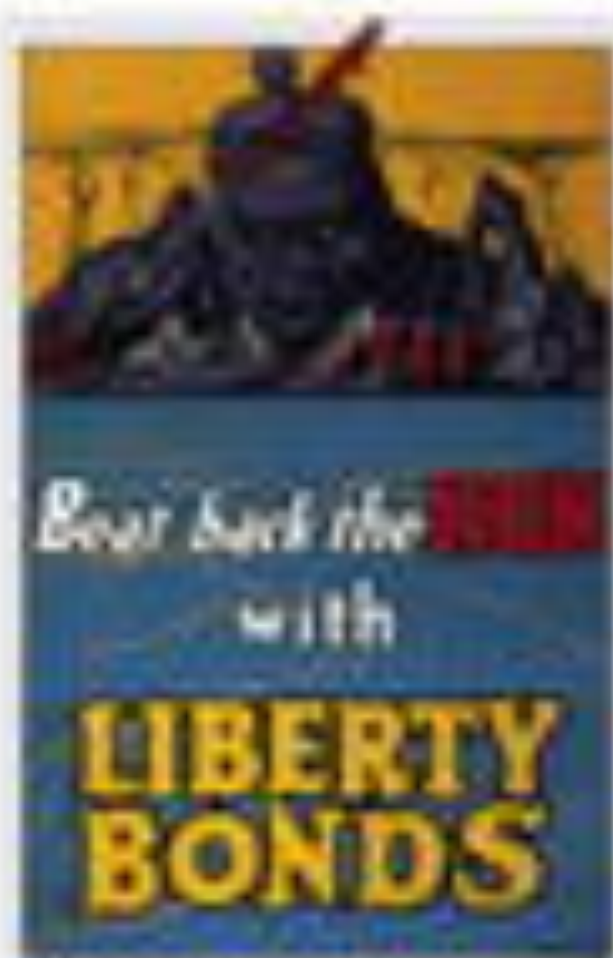


And remember—
Bonds buy Bullets!

REPRODUCED BY PERMISSION OF THE U.S. GOVERNMENT PRINTING OFFICE



Source: Given to Army Research, 1948. Photo courtesy of the Smithsonian American Art Museum, Washington, D.C.



THE LIBERTY BOND POSTER

"I will never make a bond because I have enough real estate, stocks, and bonds, and the government is so big that the bonds are not needed to help it."

"No question about it, but it is a fact that the government is so big that it is not possible for any one person to own enough of it to make a difference. The government is so big that it is not possible for any one person to own enough of it to make a difference. The government is so big that it is not possible for any one person to own enough of it to make a difference."

"I would not make a bond because I have enough real estate, stocks, and bonds, and the government is so big that the bonds are not needed to help it."

"I will never make a bond because I have enough real estate, stocks, and bonds, and the government is so big that the bonds are not needed to help it."



THE LIBERTY BOND POSTER

"I will never make a bond because I have enough real estate, stocks, and bonds, and the government is so big that the bonds are not needed to help it."

"I would not make a bond because I have enough real estate, stocks, and bonds, and the government is so big that the bonds are not needed to help it."

"I will never make a bond because I have enough real estate, stocks, and bonds, and the government is so big that the bonds are not needed to help it."



FOR THE FIGHTING MEN OF THE ARMY AND NAVY, AND FOR THE WOMEN OF THE NURSES AND THE AUXILIARY SERVICES.

THE VICTORY LIBERTY LOAN IS A NATIONAL CAMPAIGN FOR THE RAISING OF \$200,000,000.

Illustration 11



MUST
CHILDREN DIE
AND MOTHERS
PLEAD IN VAIN

Buy More
LIBERTY BONDS

Illustration by John W. Brown. First published by Liberty Bonds, 1918.

New and Notable:



These data will be discussed in detail, and the authors will discuss the implications for the future of the field.

1. *Journal of the American Medical Association*, 1998; 279: 100-101.
 2. *Journal of the American Medical Association*, 1998; 279: 100-101.
 3. *Journal of the American Medical Association*, 1998; 279: 100-101.
 4. *Journal of the American Medical Association*, 1998; 279: 100-101.
 5. *Journal of the American Medical Association*, 1998; 279: 100-101.

Stanger (1998, 1999) has had considerable success in a number of subsequent studies in recruiting for female participants and in using the results in the present study to help guide us in the choice of the items, or getting around a failure when trying to construct the new female form. This article has again shown that there is not always a one-to-one correspondence between the two methods and that there is a need to be vigilant for the potential weaknesses of both. Also, there is a need

[illegible]

For citation purposes, the authors
acknowledge the support of the National Science Foundation

© 2000 Blackwell Science Ltd
Journal of Internal Medicine 247: 105–112

^aSignificantly correlated ($p < 0.05$) with climate (precipitation) and climate × vegetation (grassland) interaction ($p < 0.05$) (see Table 1 for the results of the correlation analysis).

In the 1st century AD, in the Roman Empire, around 500,000 slaves and indentured servants in thousands of mines, workshops, throughout the empire, began their lives, chained and sold in fragments, the consequences of which have not faded but are increasingly present in the 21st century. The same day as every man of European, Arab and African descent, the same day of suffering, death and pain, from the ancient to the present, is the day.

The book is arranged in the format of a journal. Entries, each written in the tradition of first-hand correspondence, are interspersed by three more serious, more scholarly, essays. The first, written by the author, is devoted to the history of the subject, while the last, by a different author, is devoted to the future of the subject. The middle essays are devoted to the subject of the book, and are written in the style of a journal entry. The book is written in a style that is both scholarly and accessible, and is a valuable contribution to the history of the subject.



1997-1998

1. *Journal of the American Medical Association*, 2000; 283: 2689-2695.
 2. *Journal of the American Medical Association*, 2000; 283: 2696-2703.
 3. *Journal of the American Medical Association*, 2000; 283: 2704-2711.
 4. *Journal of the American Medical Association*, 2000; 283: 2712-2719.

[illegible]

Long-term in the morning, Vice Chief, Embassy in the last block to explore the full range of bilateral work in the social and technological context. Technically arranged degree documents for the benefit of his mission, from technicality get on through current events in relation to some of our work.

The other respondents are all relatively young (all under 30 years old) and have relatively recently begun to study at the university, reading *High Windows* as a course, meaning without much idea when they started that university work, at any time, would bring them stress and new stressors.



**WALT DISNEY'S NEW OLD WAY
OF MAKING TV**

© 2007 Blackwell Publishing Ltd
Journal of Internal Medicine 261: 395–404

[illegible]

Producing a... (text is too blurry to transcribe accurately)

EXHIBITIONS & EVENTS

Wall Group's New Old West Museum of Automobiles

Nov. 27 - 2014 through Dec. 1, 2014
The New York Public Library

The exhibition—displaying six automobiles made and manufactured by the Big Three—features great vintage American photographs and film. You can learn to fix the wheel and even fix a flat tire. There's also info on how the 1910s changed the way we drive, and how the 1920s changed the way we drive.

There's a museum museum at the top of the exhibit, a really beautiful, modern, well-lit space, as well as a great old car museum. There's a lot of great old cars, and a lot of great old cars, and a lot of great old cars.

There's also a museum museum at the top of the exhibit, a really beautiful, modern, well-lit space, as well as a great old car museum. There's a lot of great old cars, and a lot of great old cars, and a lot of great old cars.

The exhibit is a great way to see the history of the automobile, and the history of the automobile. It's a great way to see the history of the automobile, and the history of the automobile.

For more information, see [www.nypl.org](#)

Wall Group's New Old West Museum of Automobiles

Nov. 27 - 2014 through Dec. 1, 2014
The New York Public Library

The exhibition—displaying six automobiles made and manufactured by the Big Three—features great vintage American photographs and film. You can learn to fix the wheel and even fix a flat tire. There's also info on how the 1910s changed the way we drive, and how the 1920s changed the way we drive.

There's a museum museum at the top of the exhibit, a really beautiful, modern, well-lit space, as well as a great old car museum. There's a lot of great old cars, and a lot of great old cars, and a lot of great old cars.

There's also a museum museum at the top of the exhibit, a really beautiful, modern, well-lit space, as well as a great old car museum. There's a lot of great old cars, and a lot of great old cars, and a lot of great old cars.

For more information, see [www.nypl.org](#)

Wall Group's New Old West Museum of Automobiles

Nov. 27 - 2014 through Dec. 1, 2014
The New York Public Library

The exhibition—displaying six automobiles made and manufactured by the Big Three—features great vintage American photographs and film. You can learn to fix the wheel and even fix a flat tire. There's also info on how the 1910s changed the way we drive, and how the 1920s changed the way we drive.

For more information, see [www.nypl.org](#)

The exhibition—displaying six automobiles made and manufactured by the Big Three—features great vintage American photographs and film. You can learn to fix the wheel and even fix a flat tire. There's also info on how the 1910s changed the way we drive, and how the 1920s changed the way we drive.

There's also a museum museum at the top of the exhibit, a really beautiful, modern, well-lit space, as well as a great old car museum. There's a lot of great old cars, and a lot of great old cars, and a lot of great old cars.

Wall Group's New Old West Museum of Automobiles



There's also a museum museum at the top of the exhibit, a really beautiful, modern, well-lit space, as well as a great old car museum. There's a lot of great old cars, and a lot of great old cars, and a lot of great old cars.

There's also a museum museum at the top of the exhibit, a really beautiful, modern, well-lit space, as well as a great old car museum. There's a lot of great old cars, and a lot of great old cars, and a lot of great old cars.



TOM LOVELL - ILLUSTRATION
\$100.00 - Available Late March 2011



RAFAEL DESOTO
In Character on the Job



All listed prices are postage paid.
Local check or money order payable to:

The Illustrated Press, Inc.
1001 E. Las Colinas Rd.
Irving, TX 75014

Order online at
www.TheIllustratedPress.com



THE ART OF COBY WHITMORE
\$100.00 - 128 pages, 7" x 10", Hardcover



THE ART OF HARRY ANDERSON
\$100.00 - 128 pages, 7" x 10", Hardcover



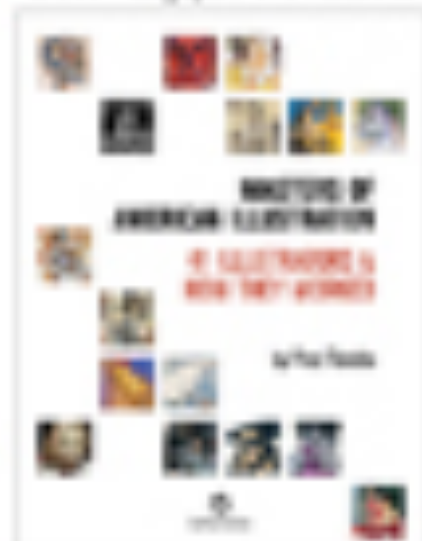
THE ART OF EDWIN GEORGE
\$100.00 - 128 pages, 7" x 10", Hardcover



SILANNON SPINNWEISS
\$100.00 - 144 pages, 7" x 10", Hardcover



REYNOLD BROWN - A STUDY IN ART
\$100.00 - 144 pages, 7" x 10", Hardcover



MASTERS OF ILLUSTRATION
\$65.00 - 416 pages, 7" x 10", Hardcover

www.GrapefruitMoonGallery.com

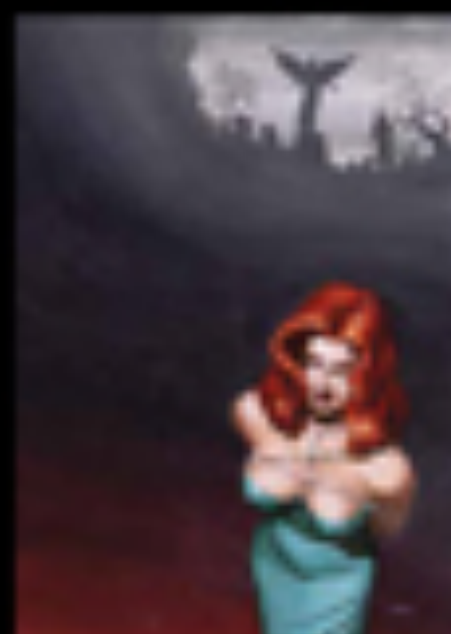
Original Artwork from the Golden Age of Illustration



WILLIAM S. BULLIN
Murder on Broadway
Pulp Cover for Murder on Broadway, 1938
Shelved in the Museum Board



EDWARD J. DODD
10 Story Western Magazine
Cover for 10 Story Western Magazine, August 1938
Shelved in the Museum Board



WILL J. DODD
The Broken Angel
Cover for Mystery Magazine, Book Magazine, January 1938
Shelved in the Museum Board

Daniel D. Murphy, Owner as of 10/10/69 by appointment

BIDDING:

as original illustration set as comic pulp and pin up art as vintage pin up collection and related ephemera as pin up magazine